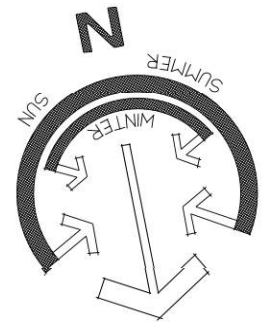


URBANA RESIDENCE

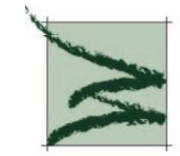
Final Landscape Plan



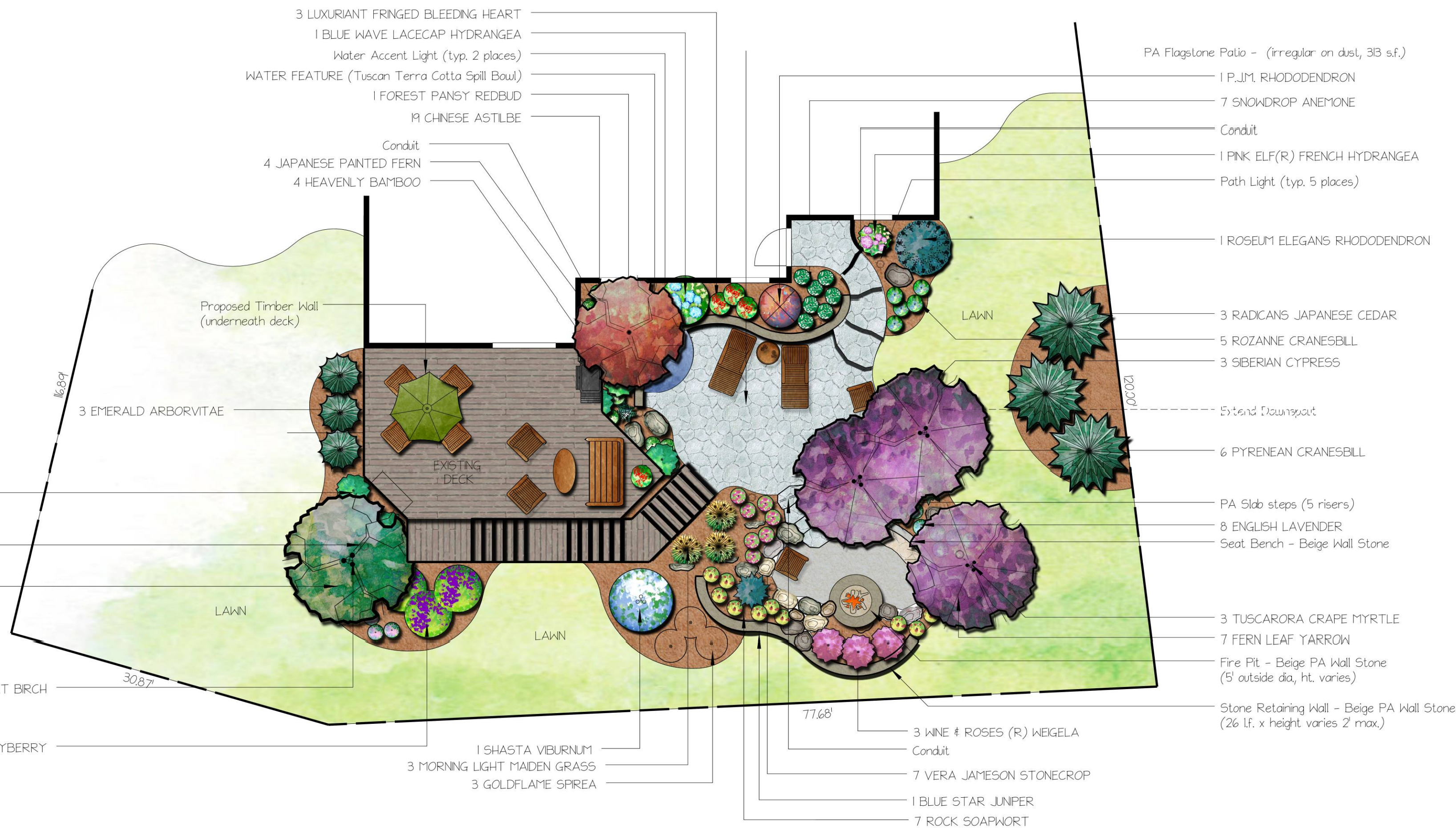
LOW VOLTAGE LIGHTING SCHEDULE

- TRANSFORMER
- ACCENT LIGHT, (TYP. 7 PLACES)
- WATER ACCENT LIGHT - (TYP. 2 PLACES)
- PATH LIGHT - (TYP. 5 PLACES)

Qty	Botanical Name	Common Name	Installed Size/Condition	Maturity
Trees				
1	<i>Cercis canadensis</i> 'Forest Pansy'	FOREST PANSY REDBUD	175-2" B#B	5' tall
3	<i>Lagerstroemia indica</i> 'Tuscarora'	TUSCARORA CRAPE MYRTLE	8-10" B#B	20' tall
Shrubs				
1	<i>Hydrangea macrophylla</i> 'Blue Wave'	BLUE WAVE LACECAP HYDRANGEA	7 Gal.	6x6'
3	<i>Spiraea x bumalda</i> 'Goldflame'	GOLDFLAME SPREA	3 Gal.	3-4'
8	<i>Nandina domestica</i>	HEAVENLY BAMBOO	7 Gal.	4-6' ht.
1	<i>Rhododendron</i> 'P.J.M.'	P.J.M. RHODODENDRON	5 Gal.	4-6'
3	<i>Hydrangea macrophylla</i> 'Pia'	PINK ELF(R) FRENCH HYDRANGEA	3 Gal.	18-24"
1	<i>Rhododendron catawbiense</i> 'Roseum Elegans'	ROSEUM ELEGANS RHODODENDRON	7 Gal.	6-8'
1	<i>Viburnum plicatum tomentosum</i> 'Shasta'	SHASTA VIBURNUM	7 Gal.	6-8'
3	<i>Weigela florida</i> 'Wine & Roses'	WINE & ROSES WEIGELA	5 Gal.	4-5'
Ornamental Grasses				
3	<i>Miscanthus sinensis</i> 'Morning Light'	MORNING LIGHT MAIDEN GRASS	2 Gal.	2' wide x 5' tall
Perennials and Annuals				
14	<i>Astilbe chinensis</i> 'Pumila'	CHINESE ASTILBE	1 Gal.	8-12"
7	<i>Achillea</i> x 'Moonshine'	FERN LEAF YARROW	1 Gal.	18-24"
1	<i>Athyrium niponicum</i> 'Pictum'	JAPANESE PAINTED FERN	None	12-15"
2	<i>Dicentra</i> x 'Luxuriant'	LUXURIANT FRINGED BLEEDING HEART	1 Gal.	12-18"
6	<i>Geranium endressii</i> 'Wargrave Pink'	PYRENEAN CRANESBILL	1 Gal.	12-15"
8	<i>Lavandula angustifolia</i> 'Munstead'	ENGLISH LAVENDER	1 Gal.	12-18"
7	<i>Saponaria ocymoides</i>	ROCK SOAPWORT	1 Gal.	8" tall x 18" spd.
5	<i>Geranium</i> x 'Rozanne'	ROZANNE CRANESBILL	1 Gal.	20" tall x 24" spd.
3	<i>Anemone sylvestris</i>	SNOWDROP ANEMONE	1 Gal.	12-15"
1	<i>Nepeta</i> x 'Faassenii' 'Walker's Low'	WALKER'S LOW CATMINT	1 Gal.	15-18"
Grandcovers				
1	<i>Juniperus squamata</i> 'Blue Star'	BLUE STAR JUNIPER	3 Gal. Heavy	3-4'
Other Plants				
3	<i>Callicarpa dichotoma</i> 'Early Amethyst'	EARLY AMETHYST BEAUTYBERRY	7 Gal.	6x6'
2	<i>Thuja occidentalis</i> 'Emerald'	EMERALD ARBORVITAE	6-7" B#B Hvy Grd	5' tall x 3-4' spd.
1	<i>Betula nigra</i> 'Heritage/Dura Heat'	HERITAGE RIVER/DURA HEAT BIRCH	12-14" B#B	30' spd. x 40' ht.
3	<i>Cryptomeria japonica</i> 'Radicans'	RADICANS JAPANESE CEDAR	6-7" B#B	8-12' wide x 30' tall
3	<i>Microbiota decussata</i>	SIBERIAN CYPRESS	3 Gal.	18" tall x 6'
1	<i>Sedum</i> x 'Vera Jameson'	VERA JAMESON STONECROP	1 Gal.	12-15"



WAGESTER DESIGN GROUP
Landscape Architecture



No.	Date	Revision
2	8/25	Revised per client comments
2	8/4	Revised per client comments
1	5/31	Revised per client comments

Client :
Urbana Res.

Address :
Urbana, MD 21704

Scale : 1/8" = 1'-0"

Plan No :

Designer : KEW
Editor : KEW
Date : Aug, 2011